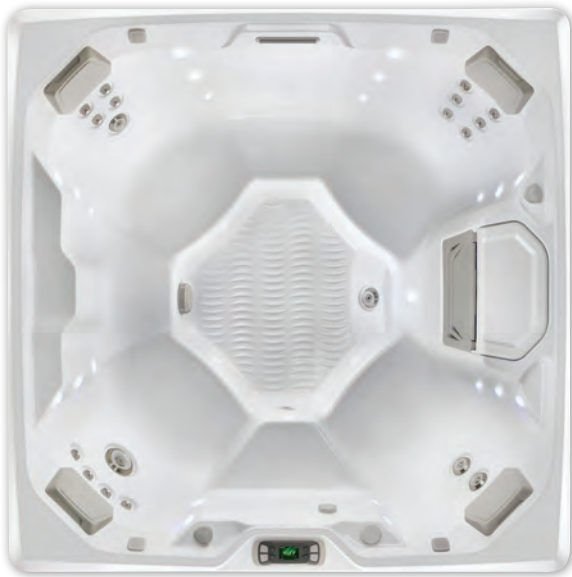


# BEAM™



Beam shown with Alpine White shell



Beam shown with Alpine White shell and Sable cabinet

<b>Seating Capacity</b>	4 adults
<b>Dimensions</b>	6' 8" x 6' 8" x 33"/2.03m x 2.03m x 0.84m
<b>Water Capacity</b>	295 gallons/1,115 liters
<b>Weight</b>	700 lbs./320 kg dry; 3,860 lbs./1,750 kg filled*
<b>Spa Shell Colors</b>	Alpine White, Ice Gray, Platinum, Tuscan Sun or Desert
<b>Cabinet Finishes</b>	Coastal Gray, Espresso or Sable
<b>Jets - 19 (w/ Brushed Stainless Steel Trim)</b>	1 XL Directional jet 2 Standard Single Rotary jets 2 Standard Directional jets 14 Directional Precision jets
<b>Water Feature</b>	Vidro® backlit ribbon waterfall
<b>Water Care System (Optional)</b>	FreshWater® Salt System
<b>Jet Pump</b>	Wavemaster® 9000 One-Speed 2.5 HP, continuous duty 5.2 HP, breakdown torque or Wavemaster 7000 One-Speed 1.65 HP, continuous duty 3.5 HP, breakdown torque
<b>Circulation Pump</b>	SilentFlo 5000® for quiet, continuous filtration
<b>Effective Filtration Area</b>	100 sq. ft., top-loading filters
<b>Control System</b>	IQ 2020® with LCD control panel 230v/50amp, 60Hz Includes G.F.C.I. protected sub-panel or 115v/20amp, 60Hz includes G.F.C.I. protected power cord
<b>Lighting System</b>	Raio® multi-color interior points of light (30) Exterior multi-color lighting with timer
<b>Heater</b>	No-Fault®, 6,000w/230v or 1,500w/115v
<b>Energy Efficiency</b>	FiberCor® insulation; Certified to the APSP 14 National Standard and the California Energy Commission (CEC) in accordance with California law
<b>Vinyl Cover</b>	3.5" to 2.5" tapered, 2 lb. density foam core, with hinge seal in Caramel, Chestnut or Slate
<b>Cover Lifter (Optional)</b>	CoverCradle®, CoverCradle II, Lift 'n Glide® or UpRite®
<b>Steps (Optional)</b>	Everwood® or Polymer
<b>Entertainment System (Optional)</b>	Wireless Entertainment
<b>Hot Tub Cooling System (Optional)</b>	CoolZone™

\* Includes water and 4 adults weighing 175 lbs. each  
Export models available in 240v, 50Hz, 1500w heater